



# Select 8 – upgrading to 8.10

Last update: April 2022

This Software is provided by Emerson Commercial & Residential Solutions Europe to assist in the selection of compressors and condensing units. Emerson Commercial & Residential Solutions cannot be held liable for issues arising from the application using information provided by this software.





## 1. Introduction

This document will guide you step by step through the process of upgrading Select to version 8.10.

## 2. Why is a manual action required?

The latest version of Select comes with a new type of installer context, moving out from per-user to per-machine installation, this approach is considered a best practice and will give more flexibility to your IT department. Unfortunately upgrading a version from one context to another is not supported by the auto-update feature.

## 3. Preparations

The operations below will require an account with administrator privileges, starting with Select version 8.7.2 it will be mandatory to uninstall Select too.

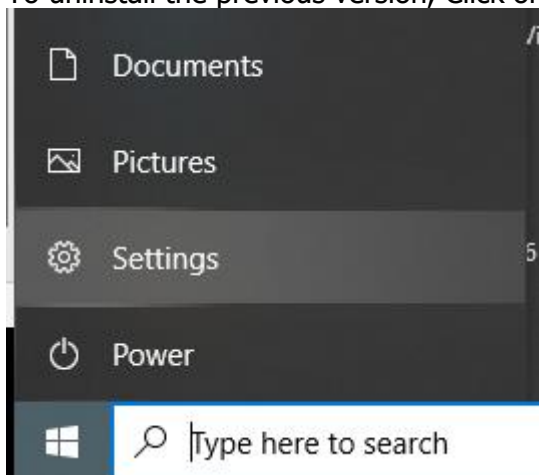
Download the latest version of Select : [Select 8.10.3](#)

If needed, a link to download the previous version is also available [here](#), but normally you should be able to uninstall it through the app menu of Windows.

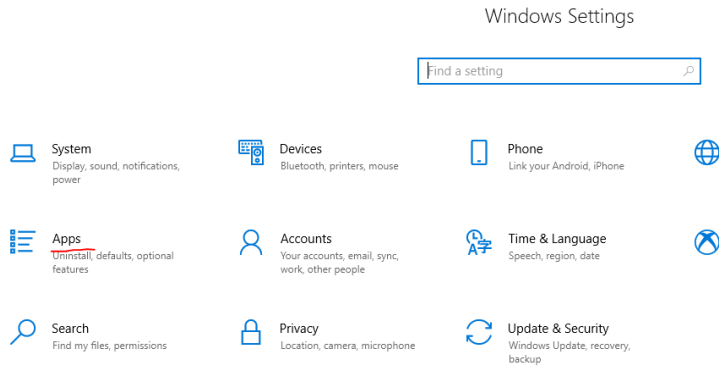
Please follow the steps below, first point 4 and then 5.

## 4. Uninstalling older versions

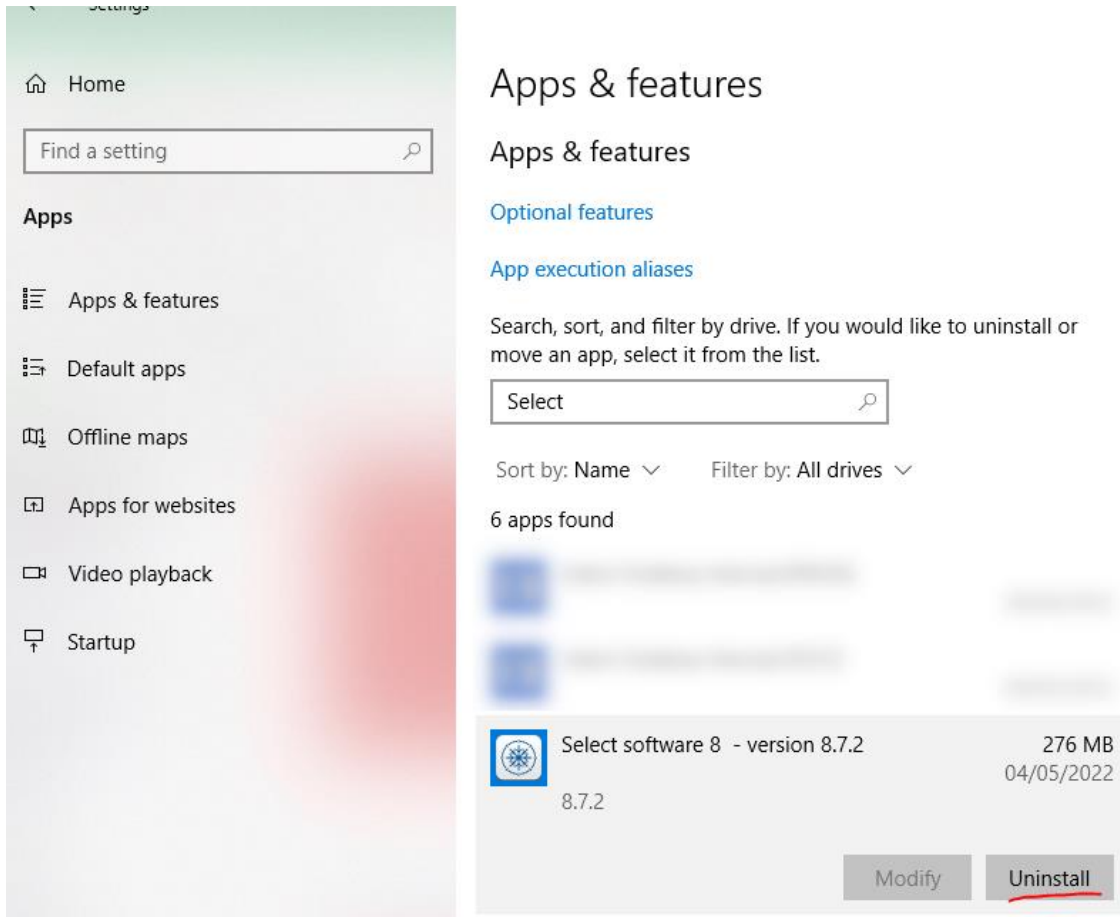
To uninstall the previous version, Click on Windows "Start" button then "Settings"



Select "Apps"

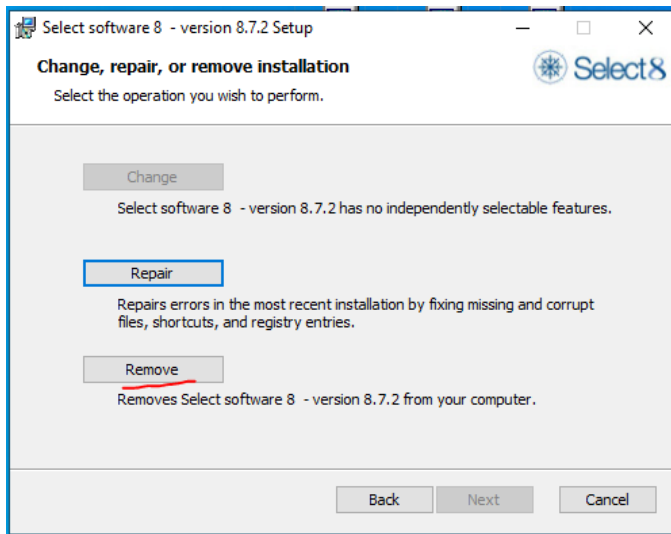


and under "App & features" search for keyword "Select" then click on "Uninstall". You will be prompted to enter an account with admin privileges (or to accept the changes if you are admin).





If for whatever reasons, there is no entry, but you see some Select Desktop shortcut present and functional on your Desktop, please run the old installer (see link above) and choose the option to remove.

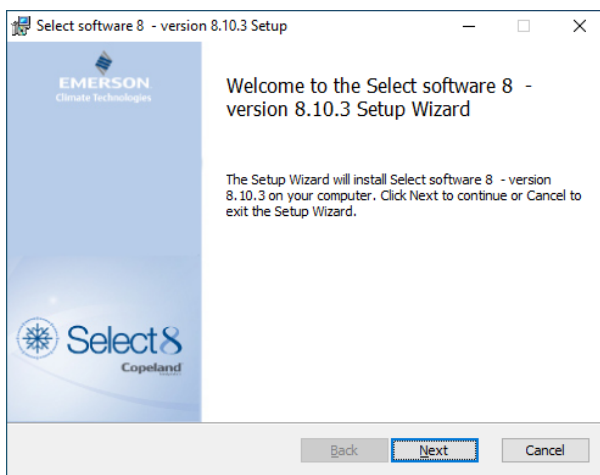


If this is not working or you have an older version you cannot uninstall, please contact [select.feedback@emerson.com](mailto:select.feedback@emerson.com).

## 5. Installing 8.10

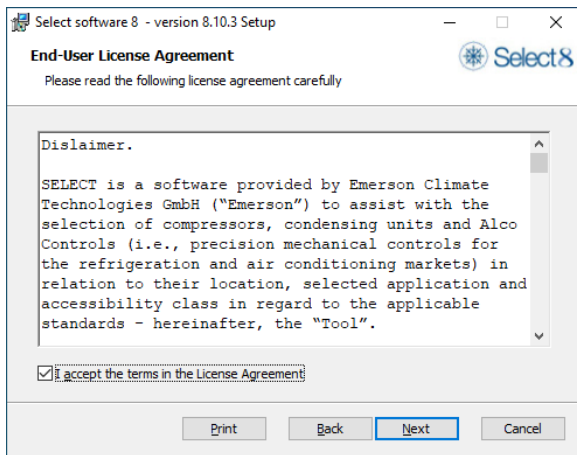
Once any remaining older versions are uninstalled, we can move to the installation of the new version you have download in point 3.

Double click on the msi file, then click “Next”

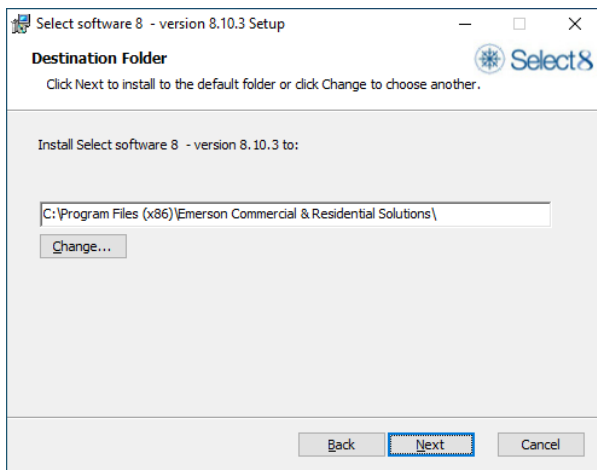




Accept the license by ticking the box

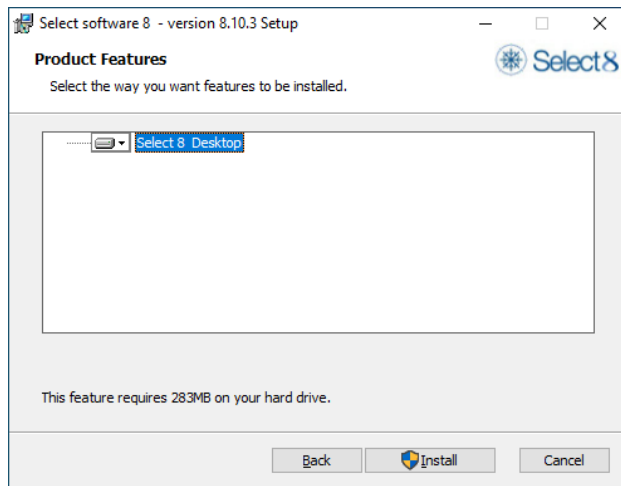


Choose your installation path or leave the default

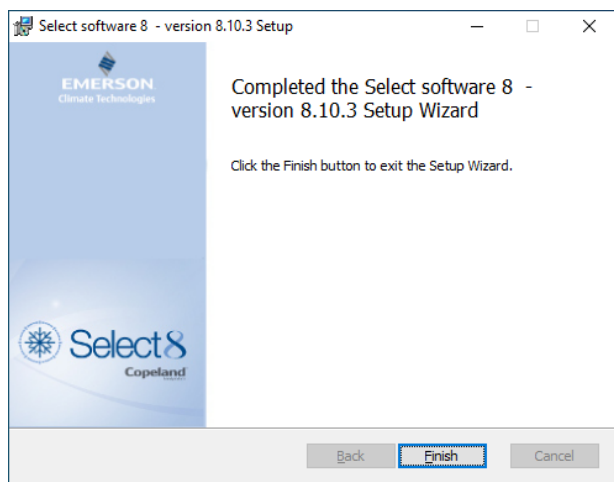




Click the “Install” button to start the installation process of Select



Congratulations, Select is now installed for all the users of the machine.



You can start the software by clicking on the shortcut on your Desktop. Once upgraded to version 8.10, the auto updates will be available once again.

Welkenraedt, April 2022